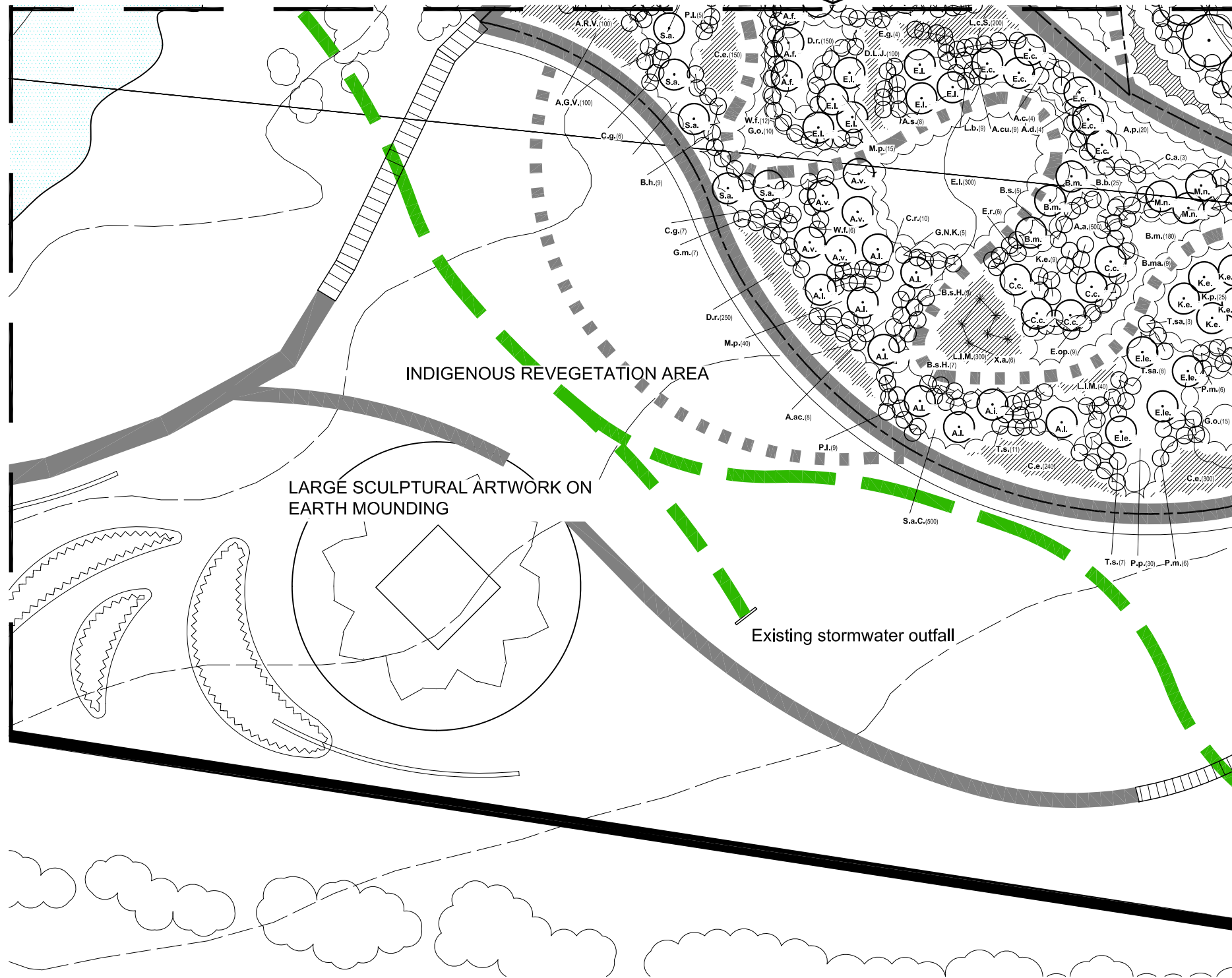


MATCHLINE JOINS SHEET 11

AUSTRALIAN DRYLAND GARDEN

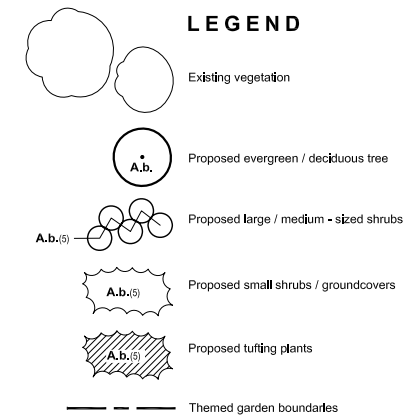
MATCHLINE JOINS SHEET 13

MATCHLINE JOINS SHEET 15



PLANT SCHEDULE: AUSTRALIAN DRYLAND GARDEN

KEY	BOTANIC NAME	QTY.
A.a.c.	ACACIA ACINACEA	8
A.i.	ACACIA IMPLEXA	4
A.m.	ACACIA MELANOXYLON	4
A.c.	ADENANTHOS CUNEATA	41
A.c.u.	ADENANTHOS CUNNINGHAMII	9
A.d.	ADENANTHOS DETMOLDII	4
A.p.	ADENANTHOS PUNGENS	20
A.s.	ADENANTHOS SERICEUS	8
A.f.	AGONIS FLEXUOSA	4
A.f.a.	AGONIS FLEXUOSA 'AFTER DARK'	3
A.a.	AJUGA AUSTRALIS 'AUSSIE BUGLE'	500
A.l.	ALLOCASUARINA LITTORALIS	5
A.v.	ALLOCASUARINA VERTICILLATA	5
A.G.V.	ANGOZANTHUS 'GOLD VELVET'	100
A.R.V.	ANGOZANTHUS 'RUBY VELVET'	100
B.b.	BANKSIA BLECHNIFOLIA	35
B.ma.	BANKSIA MARGINATA	9
B.se.	BANKSIA SERRATA	5
B.s.H.	BANKSIA SPINULOSA 'HONEY POTS'	16
B.h.	BORONIA HETROPHYLLA	9
B.m.	BRACHYSCOME MULTIFIDA	180
C.c.	CALLISTEMON CITRINUS	5
C.p.	CALLISTEMON PEARSONII 'ROCKY RAMBLER'	10
C.ap.	CHRYSOCEPHALUM APICULATUM	100
C.s.	CHRYSOCEPHALUM SEMPAPPOSUM	80
C.a.	CORREA ALBA	3
C.g.	CORREA GLABRA	13
C.r.	CORREA REFLEXA	10
C.e.	CROWEA EXALATA	690
D.v.P.	DODONAEA VISCOSA 'PURPUREA'	12
D.L.J.	DIANELLA 'LITTLE JESS'	100
D.re.	DIANELLA REVOLUTA	350
D.r.	DICHONDRA REPENS	150
E.I.	EPACRIS IMPRESSA	300
E.g.	EREMOPHILA GLABRA	4
E.n.	EREMOPHILA NIVEA	6
E.o.	EREMOPHILA OPPOSITIFOLIA 'PURPLE'	9
E.r.	EREMOPHILA RACEMOSA	6
E.c.	EUCALYPTUS CAESIA	6
E.I.	EUCALYPTUS LATENS	7
E.le.	EUCALYPTUS LEUCOXYLON 'ROSEA'	4
E.w.	EUCALYPTUS WOODWARDII	3
G.e.	GREVILLEA ENDLICHERIANA	4
G.M.	GREVILLEA 'MOONLIGHT'	16
G.N.K.	GREVILLEA 'NED KELLY'	9
G.o.	GREVILLEA OBTUSIFOLIA 'GINGIN GEM'	25
K.p.	KENNEDIA PROSTRATA	75
K.e.	KUNZEA ERICOIDES	14
L.b.	LEUCOPHYTA BROWNII	9
L.c.S.	LOMANDRA CONFERTIFOLIA 'SEASCAPE'	200
L.I.	LOMANDRA LONGIFOLIA	125
L.I.M.	LOMANDRA LONGIFOLIA 'MALACOOTA TUFF'	340
M.n.	MELALEUCA NESOPHILA	3
M.p.	MYOPORUM PARVIFOLIUM	55
P.I.	PERSOONIA LINEARIS	14
P.m.	PHILOTHECA MYOPOROIDES	6
P.p.	PULTENAEAE PEDUNCULATA	30
P.o.	POMADERRIS OBCORDATUM 'MALLEE PRINCESS'	7
R.s.	RHAGODIA SPINESCENS	6
S.a.C.	SCAEOVOLA AEMULA 'CULTIVARS'	780
S.a.	SYZYGIUM AUSTRALE	5
T.s.	TELOPEA SPECIOSISSIMA	18
T.sa.	THRYPOMENE SAXICOLA	11
W.f.	WESTRINGIA FRUTICOSA 'WYNYABBIE GEM'	18
X.a.	XANTHORRHOEA AUSTRALIS	6



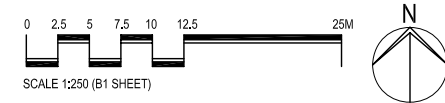
REFER TO LAYOUT PLANS FOR PATH AND FACILITY INFORMATION

PRINT ISSUE: R. Thomas 24-02-09 REVISIONS: REV A 14-04-09
Report 15-04-09

Drawn: M. B.
Date: 18-02-09

FRAMEWORK PLANTING PLAN (SHEET 14 OF 15)

MELTON BOTANIC GARDEN
SHIRE OF MELTON



Michael Smith and Associates
Landscape Architecture and Urban Design
Office: 1st Floor, 407 Whitehorse Road, Balwyn, 3103
Postal: 5 Jervis Street, Camberwell, 3124
Tel: 9830 0414 Fax: 9830 2555

In association with:
Brecknock Consulting Pty Ltd
Practical Ecology Pty Ltd
Traffix Group Pty Ltd
Paoli Smith Pty Ltd